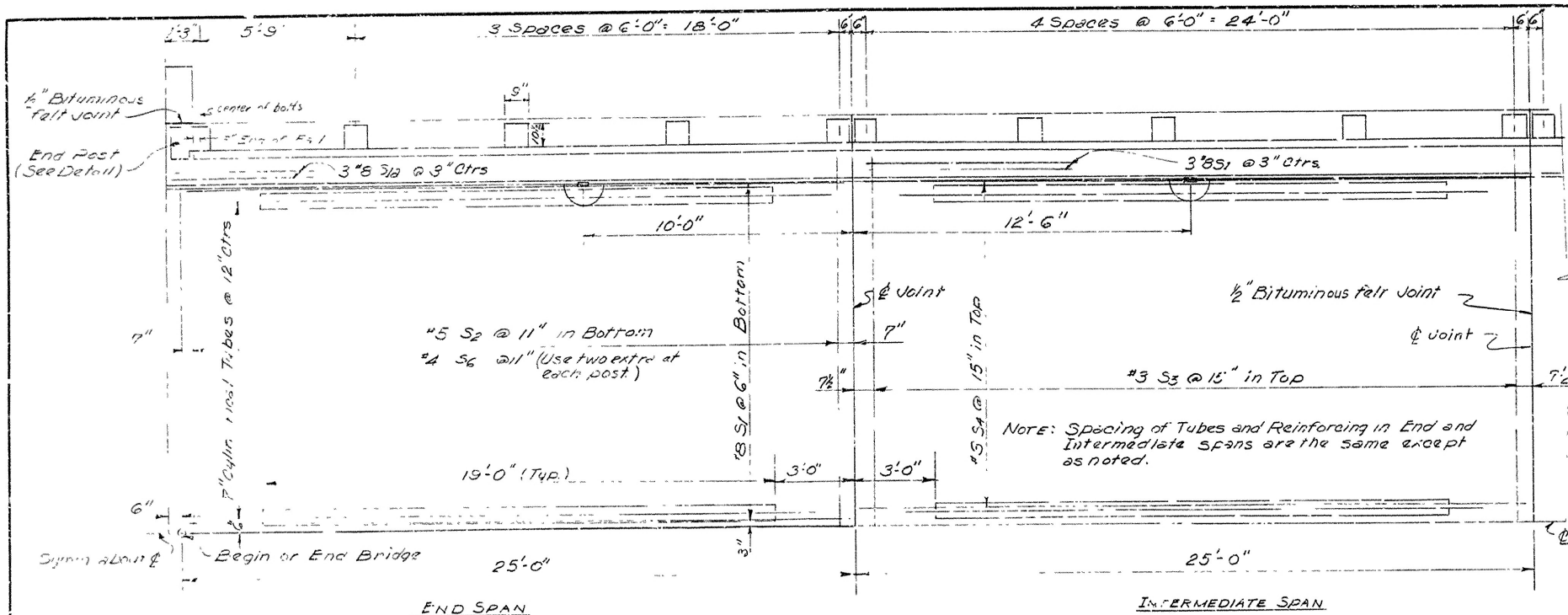
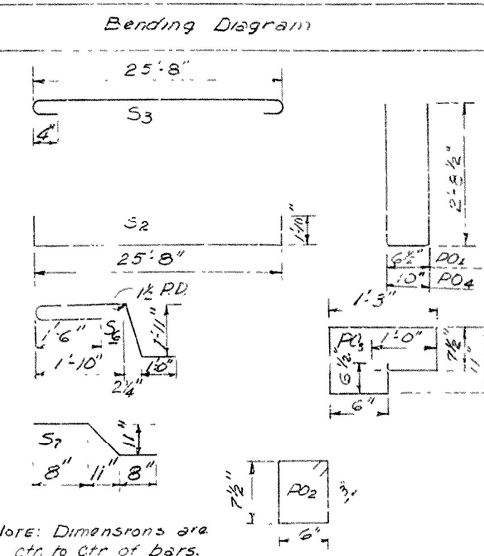


FED. ROAD No	STATE	FED AID PROJECT	FISCAL YEAR	SHEET No	TOTAL SHEET
6	ARK.				
JOB No.					



Mark	Size	No. Required		Length		Pin
		End	Inter.	End	Inter.	Dia.
S ₁	" 8	48	54	24'-8"	24'-8"	Str
S ₁₀	8	6	-	25'-2"	-	Str
S ₂	5	27	27	29'-3"	29'-3"	1 1/2"
S ₃	3	20	20	25'-7"	26'-7"	2 1/2"
S ₄	3	20	20	24'-8"	24'-8"	Str
S ₅	" 8	-	-	25'-2"	-	Str
S _{5A}	4	-	8	-	24'-8"	Str
S ₆	4	74	74	6'-5"	6'-5"	3"
S ₇	4	184	184	2'-7"	2'-7"	1 1/2"
S ₈	4	12	-	2'-0"	-	Str
S ₉	4	12	-	1'-10"	-	Str
*PQ ₁	5	18	20	5'-10"	5'-10"	1 1/2"
*PQ ₂	3	24	30	2'-8"	2'-8"	1 1/4"
*PQ ₃	3	6	-	4'-7"	-	1 1/4"
*PQ ₄	5	4	-	6'-1"	-	1 1/2"



GENERAL NOTES

All concrete to be Class S. All exposed corners to be chamfered $3/4"$ unless otherwise noted.

Reinforcing steel to be deformed bars of intermediate or hard grade. Shop lists and bending diagrams must be submitted and approval secured before fabrication is begun.

✓ All cylindrical tubes used to form voids shall be of moisture protected, laminated type construction, minimum thickness 0.200, and shall be furnished complete with end closures.

All reinforcing steel and fiber tubes shall be accurately located in the forms and firmly held in place by means of steel wire supports and spacers for tubes of a sufficient size and number to prevent displacement during the course of construction, but in no case of lesser design than that shown.

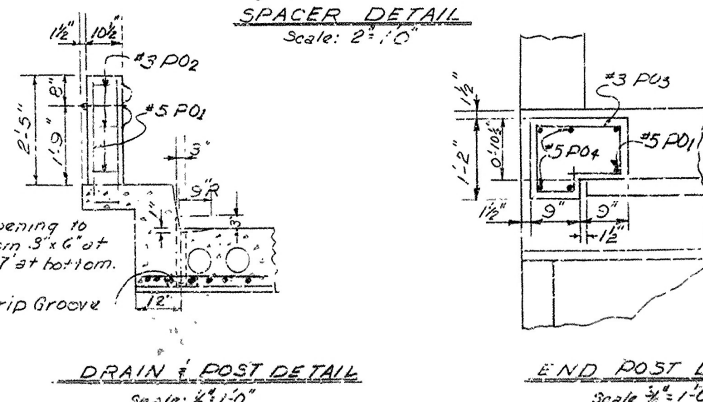
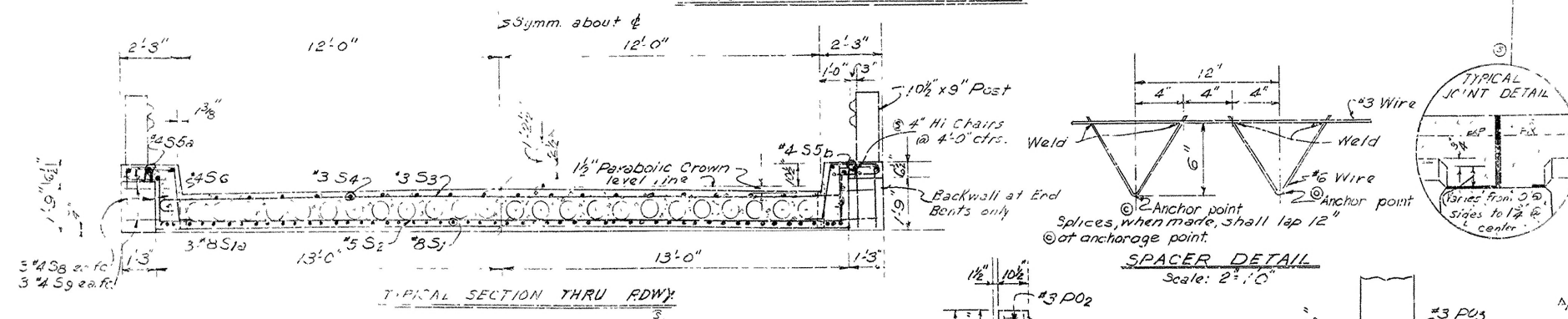
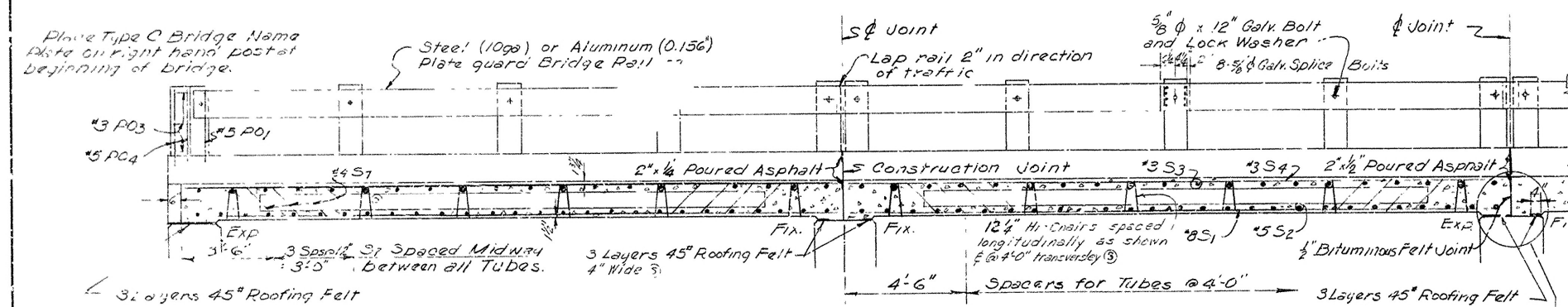
Wire supports for reinforcing bars will not be paid for directly, but will be considered subsidiary to the item "Reinforcing Steel".

Tubes for forming voids and wire supports and spacers for tubes will not be paid for directly, but will be considered subsidiary to the item "Class S Concrete".

Shop lists and diagrams of wire supports and spacers for tubes shall be submitted for approval before fabrication is begun.

Roofing felt, bituminous felt, and poured asphalt joints shall be measured and paid for as Class S Concrete.

Steel or Aluminum Plate Guard shall be of the type shown or an equivalent rigid type as approved by the Engineer. The rail, including all concrete post... fastenings shall be paid for at the unit price bid per linear foot for "Steel or Aluminum Plate Guard Bridge Railings".



SPECIFICATIONS: Arkansas State Highway Commission Standard Specifications for Highway Construction, Edition of 1959, and designated Special Provisions.

DESIGN SPECIFICATIONS: AASHTO 1961^Δ
 Design Live Loading: H-15
 Load Distribution to Slab: Dead Load; 150 #/ft
 Live Load; 0.184^Δ Wheels per foot of width plus 30% impact
 Unit Stresses: Class S Concrete (n=10) 1,200 psi
 Reinforcing Steel 20,000 psi

DETAILS OF STANDARD
 25'-0" R.C. SLAB SPANS (WITH
 24'-0" CLEAR ROADWAY 1'-0" CURBS
 Voids)
 ROUTE SEC.
 ARKANSAS STATE HIGHWAY COMMISSION
 LITTLE ROCK, ARK.
 DRAWN BY: M.G. DATE: 9-7-61
 CHECKED BY: gwt DATE: 2-12-61
 SCALE: 3/8" = 1'-0" 2nd set not used
 BRIDGE NO. DRAWING NO. 5463-F

DRAWN BY: N.G. DATE: 9-7-61
 TRACED BY: _____ DATE: _____ SCALE: 3/8" = 1'-0" as noted
 CHECKED BY: J.M. DATE: 9-12-61
 BRIDGE NO. _____ DRAWING NO. 5463-F

